



**Here you get the chance to study two fascinating fields in the social sciences. You will spend equal time on both disciplines.**

**You will look into such topics as the effects of social diversity and inequality on crime rates, develop an understanding of a range of research methods and data analysis skills, and develop knowledge of a range of influences on psychological well-being.**

**You will get involved in debate, learn to work independently, demonstrate critical analysis skills and learn how to formulate and evaluate research and data - all skills that will be of huge value in the world of work.**

**Modules are: Level 4**

## **Skills for Interdisciplinary Study**

Whether it has been years since you studied or you have barely taken a breath since your last essay, this module is the gateway to your brand new course. We will be looking both at developing your skills as a learner and also helping you look at problems from different perspectives.

You will be introduced to your online academic community and discover more about the key skills needed for your course. You will, at the same time, be developing the personal skills demanded by employers to help you to improve your career prospects.

## **Introduction to Social & Developmental Psychology**

Here, you'll get your first taste of two of the core domains of psychology: developmental and social psychology. Developmental

psychology examines the changes in human beings over their lifespan, from infancy and childhood through adolescence, adulthood and ageing. The theories involved cover a huge range of topics including language acquisition, personality and ideas about the self and forming an identity. Through social psychology, you'll look at people's thoughts, feelings and behaviours and how they are influenced.

## **Introduction to Biological & Cognitive Psychology**

You are introduced to two further core domains here: biological and cognitive psychology. You will learn about some of the biological processes and cognitive principles you need to understand psychology, including the basic structure and functions of the nervous system. Cognitive psychological processes are central to the way humans see, listen and learn new skills,

so through this you will explore perception, attention, learning, memory and decision making - and get an introduction to the way cognitive psychologists explore human mental processes.

## **Crime & Society**

This module will provide you with an introduction to the study of criminology from its beginnings in the 1700s right up to all the latest thinking about crime and criminal justice. You will discover why they call criminology a 'rendezvous discipline', with its mix of sociology, psychology, law and political philosophy.

You will start to explore theories about crime and models of criminal justice, as well as looking at explanatory factors for crime, such as social class, gender, family, health, education and race and ethnicity, and consider some criminology sub-branches, such as victimology.



## Criminal Justice System

Here you will be introduced to the criminal justice process in England and Wales. You will consider the concept of justice, processes within the Criminal Justice System and the consequences of criminal justice.

The implications of discrimination in terms of age, gender, class and race will be considered, and you will also explore competing views of the aims and objectives of policing, prosecution, the courts and correctional services. You will be introduced to the complexity of the criminal justice remit including issues ranging from property crime to contemporary slavery and cybercrime; and discuss the problem of dealing with new challenges in a period of shrinking resources.

## Key Studies in Psychology

In this module you'll take a look at several important studies in

the history of psychology. These key works will give you a broad view of the different ways the mind can be investigated and some insight into the way that the discipline has evolved. You'll learn about the context in which they were developed and the impact they have had on different branches of psychology.

## Level 5

### Research and Ethics in Action

This project gives you the chance to showcase your abilities in a piece of work that you design. You will scope out a project and design a methodology to undertake it, learning how to consider different perspectives and developing a range of skills with wide application in the workplace. You will also be required to consider the ethical issues of the work that you are undertaking, which will also give you a chance to think about how we should incorporate ethics into our decision making.

At the end of the module, you will apply all this in a practical way in your final project.

## Personality and Intelligence

This module takes us into other key areas that psychology focuses on: personality and intelligence. You'll explore the key theories, debates, measurement and values of personality and intelligence.

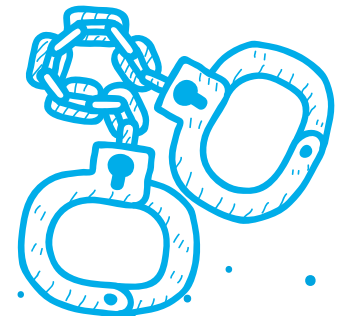
There are a number of substantial topics to engage with, including psychoanalytic, behavioural, cultural, social, humanistic, trait-based, and biological approaches to personality. You'll discover psychological testing, historical and contemporary approaches to intelligence and their implications for education and society. Delving deeper, there will be sessions on the roles of genes and environment, plus a look at biological and psychological factors. You'll also take a look at the most widely-used psychometric tests

covering both personality and intelligence.

## Social Psychology

One of the key things that you will have learned by now is that there is always more than one way to look at a problem. This module considers several different schools of thought as we consider how we might study individuals within groups.

You will look at how certain social groups, with their identities and beliefs, influence the way people think and behave in different situations. You'll examine communication, cohesion, decision making, leadership, and conflict within groups, comparing and contrasting the work of leading writers.





## Contemporary Debates in Criminology

Issues relating to crime and justice are discussed on a regular basis in the media. This module will consider a range of topics currently being debated. These might include: hate crime; the age of criminal responsibility, including high-profile cases of juveniles committing serious offences; global organised crime and terrorism; and miscarriages of justice.

Beneath all these topics are deeper issues about how the State should function, including policies that address social exclusion, the integrity of police investigations and civil liberty vs surveillance

## Environmental Criminology

In this module you will examine the 'environment' in two of the senses in which this term is currently used in criminology. The first is the study of crime in relation to the urban

environments, including looking at how urban renewal, gentrification and globalisation can impact on crime rates. You will also get an introduction into the ways in which crime pattern analysis can be used to aid policing.

The second type of environmental criminology is often described as 'green criminology' because it focuses on issues such as pollution, illegal trade in rare species, toxic waste, conservation, major ecological disasters and climate change - and the question of whether new Laws need to be developed to deal with these emerging problems.

## Policing & Police Powers

The aim of this module is to enable you to understand the variety of police work carried out in England and Wales, including policing functions, strategies and accountabilities. You will also consider the wider implications of youth and

community police relationships, international aspects of policing and the complex task of striking a balance between surveillance and civil liberties. Public order policing, community policing, police effectiveness, and information on police recruitment and working culture are also explored as part of this module.

## Level 6

## Contemporary Developmental Psychology

How do people develop throughout their lives? This is the module where you'll look at all the important theories and debates, from the development of self, gender identity and early social interaction to cognitive development and how childhood experiences can affect later development. You will be encouraged to look at the theories holistically, linking the latest thinking about how all the different aspects of development relate to each

other, including biological, cognitive, language, social and contextual elements.

## Cross-Cultural Psychology

Most psychological research has been done in the West - and that means it only really applies to a limited population. With borders between Eastern and Western cultures becoming increasingly blurred, psychology has turned its attention to the way different societies operate, how we understand each other and how we act towards each other. Cross-cultural psychology looks at the similarities and differences between cultures - and you'll learn how these kinds of studies are done, so you've got the tools to carry out your own research. As you near the end of the programme you will be able to exercise your critical and analytical skills to develop practical solutions to problems and this module gives you the chance to do that by taking a case study approach.



## Cybercrime

In October 2015 it was reported that the rate of UK crime more than doubled. The reason for this was the inclusion of a staggering 7.6 million incidences of online fraud and cybercrime.

In this module, you will consider the technological developments making this possible and explore links with other areas of the criminal justice system as well as how it relates to other parts of the programme.

## Youth Justice

Beginning with a study of the historical development of the youth justice system, this module will give you the opportunity to think about how our society deals with young people and criminal behaviour.

We will examine all the main current schools of thought and use them to analyse today's youth justice system.

## Research Planning & Project

This is the final module of your degree and gives you the opportunity to specialise in an area of the programme that has interested you the most. It is a major piece of independent work and throughout your study we will provide you with the skills that you need to complete it. Working with your supervising tutor, you will choose an interdisciplinary area related to your degree to research. You will have the opportunity to apply all the skills you have learned throughout the programme to demonstrate your ability to design and implement a piece of work. This provides a showcase for your abilities and something that evidences the sorts of skills demanded by employers.

Your work will help you to understand the sometimes contradictory purposes of youth justice, take an informed look at current issues, and explore how policy and practice reflect our shifting ideas of justice for young people.

## Course duration and hours of study

This varies depending on your rate of progress -but you can access modules at a pace that is convenient for you. Once you have accessed a module, there is a minimum and maximum time that you will need to finish the module within.

You can find out more information on the course page, visit [www.arden.ac.uk](http://www.arden.ac.uk). Alternatively, please call our admissions team on:

+44 (0) 2476 515700 or

0800 268 7737 for more details.

## Entry requirements

To be eligible for this course you must have either:

Two subjects at GCE A level or equivalent, plus passes at grade C or above in three subjects at GCSE level or equivalent; or completed a recognised Access Programme or equivalent.

For students whose prior learning was not taught in English:

IELTS 6.0 or equivalent.

## If you have work experience

We're happy to consider an application from you if you can show us you have the motivation to study the programme.

## How to apply

Visit: [www.arden.ac.uk](http://www.arden.ac.uk)

Email: [admissions@arden.ac.uk](mailto:admissions@arden.ac.uk)

Call: +44 (0) 2476 515700 / 0800 268 7737