



Psychology is a fascinating science. Why do people behave in the way they do? How do our minds work? The key knowledge areas within psychology will all be covered in this course: research methods, biological psychology, cognitive psychology, individual differences, developmental psychology and social psychology. You will also gain knowledge of the history of psychological theory.



**Modules are:
Level 4**

Introduction to Studying Psychology

This opening module will provide you with an introduction to both the study of psychology and to university level learning in general. As well as an overview of some of the major topics in psychology, we will show you how to get full benefit from the online-based learning materials and interactive exercises. You will also begin the process of learning with your fellow students via the discussion forums. The work you do here will be invaluable in later modules as you use your new skills in literature searching, critical thinking and academic writing.

Introduction to Social and Developmental Psychology

Here, you'll get your first taste of two of the core domains of psychology: developmental and social psychology. Developmental psychology examines the changes in human beings over their lifespan, from infancy and childhood through adolescence, adulthood and ageing. The theories involved cover a huge range of topics including language acquisition, personality and ideas about the self and forming an identity. Through social psychology, you'll look at people's thoughts, feelings and behaviours and how they are influenced.

Introduction to Biological and Cognitive Psychology

You are introduced to two further core domains: biological and cognitive psychology. You will learn about some of the biological processes and cognitive principles you need to understand psychology, including the basic structure and functions of the nervous system. Cognitive psychological processes are central to the way humans see, listen and learn new skills, so through this you will explore perception, attention, learning, memory and decision making - and get an introduction to the way cognitive psychologists explore human mental processes.





Introduction to Research Methods 1

Being able to undertake empirical research is essential to the study of psychology and the first level of your course includes two research method modules. These are designed to begin your development of the knowledge and skills you'll need for your own empirical research. Part 1 includes the building blocks of good research design and introduces you to the basic tools of experimental methodology. By the end of the module you will be able to design simple studies using both qualitative and quantitative methods and report on them using a standard professional format.

Introduction to Research Methods 2

Onto part 2 of your first level research method modules and here you'll be building on the knowledge and skills you started in part 1. You will continue with your work on how to present psychological

data in a standard professional report and begin to look critically at the published results of psychological research. Being able to report on your own work or evaluate that of others means that you need to develop sound statistical skills. This module will introduce some key concepts such as descriptive and inferential statistics and show you how to use statistics packages such as SPSS (Statistical Package for the Social Sciences).

Key Studies in Psychology

In this module you'll take a look at several important studies in the history of psychology. These key works will give you a broad view of the different ways the mind can be investigated and some insight into the way that the discipline has evolved. You'll learn about the context in which they were developed and the impact they have had on different branches of psychology.

Level 5

Personality and Intelligence

This module takes us into other key areas that psychology focuses on: personality and intelligence. You'll explore the key theories, debates, measurement and values of personality and intelligence.

There are a number of substantial topics to engage with, including psychoanalytic, behavioural, cultural, social, humanistic, trait-based, and biological approaches to personality. You'll discover psychological testing, historical and contemporary approaches to intelligence and their implications for education and society. Delving deeper, there will be sessions on the roles of genes and environment, plus a look at biological and psychological factors. You'll also take a look at the most widely-used psychometric tests covering both personality and intelligence.

Social Psychology

One of the key things that you will have learned by now is that there is always more than one way to look at a problem. This module considers several different schools of thought as we consider how we might study individuals within groups.

You will look at how certain social groups, with their identities and beliefs, influence the way people think and behave in different situations. You'll examine communication, cohesion, decision making, leadership, and conflict within groups, comparing and contrasting the work of leading writers.

Brain and Behaviour

Here, the main goal is to understand the influence of biology on behaviour and experience. You will look at topics from general sensory processing through to language and consciousness and consider the extent to which biology is needed to explain human behaviour.



For example, you'll discover the differences between sensation and perception. Towards the end of the module, you will also investigate neuroplasticity - how the brain adapts to changes by creating new neural pathways.

Advanced Topics in Cognitive Psychology

In getting to this stage you will have already demonstrated your understanding of many of the processes that we will be investigating here, such as remembering, communicating and thinking. You will explore short and long-term memory and language theories involving speech and reading, including a look at bilingualism. In the thinking section, you'll consider how individuals think and make decisions.

Quantitative Research Methods

You were introduced to statistics in the previous level and here we will begin your preparation for the final stage project that you will be undertaking. The work you do here is an

important part of your degree and will provide valuable transferrable skills. You will look at a number of statistical analyses and explore the underlying principles including hypothesis generation, step-by-step calculations, analysis, and interpretation and reporting. You'll design and run your own experiment, including thinking about ethics, analysing the data, interpreting your results and writing up a report in the professional format you learned about in the first year.

Qualitative Research Methods

The second stage of research methods at this level exposes you to a range of techniques in qualitative methods; all of which will help you with your final project and be valuable in your future career. You will develop skills in using techniques such as observation, interviews, and focus groups - and how to draw out the findings through analysis. After evaluating a previous study you will have the confidence to design and carry out an

interview, complete with all the ethical considerations you need to think about. You'll transcribe your interview, analyse it and interpret it.

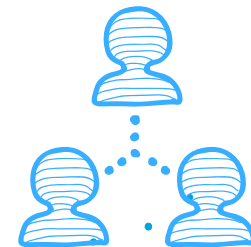
Level 6

Contemporary Developmental Psychology

How do people develop throughout their lives? This is the module where you'll look at all the important theories and debates, from the development of self, gender identity and early social interaction to cognitive development and how childhood experiences can affect later development. You will be encouraged to look at the theories holistically, linking the latest thinking about how all the different aspects of development relate to each other, including biological, cognitive, language, social and contextual elements.

Cross-Cultural Psychology

Most psychological research has been done in the West - and that means it only really applies to a limited population. With borders between Eastern and Western cultures becoming increasingly blurred, psychology has turned its attention to the way different societies operate, how we understand each other and how we act towards each other. Cross-cultural psychology looks at the similarities and differences between cultures - and you'll learn how these kinds of studies are done, so you've got the tools to carry out your own research. As you near the end of the programme you will be able to exercise your critical and analytical skills to develop practical solutions to problems and this module gives you the chance to do that by taking a case study approach.





Occupational Psychology

Applying psychology to the world of work is aimed at getting the best out of employees and improving their job satisfaction. And with the workplace changing more quickly than ever, this is a dynamic sector. You'll discover all the latest thinking about personality and motivation, leadership and teamwork, and organisational development and change. You'll consider how technology, the economy, as well as social and political changes impact organisations - and the groups and individuals who work in them. As with the previous module, you'll have the chance to apply your study in a practical way, through case studies.

Mental Health and Illness

In this module you will look at the complex nature, causes and treatment of mental health

problems such as anxiety, depression, schizophrenia, personality disorders and eating disorders. You'll look at different proposed explanations of mental illness and think about how these would impact on diagnosis and treatment. You'll understand the different factors that affect mental health, evaluate mental health policy and practice and take a look at techniques such as mindfulness training.

Research Project

An important step to demonstrate what you have learnt is successfully completing your own research project. This is your chance to choose your own topic to study in depth and put into practice all the skills you have developed on the course. Whether you choose a quantitative or qualitative study is up to you - but your project will be empirical, involving data and analysis.

You will have a personal supervisor to support and encourage you throughout this project.

Course duration and hours of study

This varies depending on your rate of progress - you can access modules at a pace that is convenient for you. Once you have accessed a module, there is a minimum and maximum time that you will need to finish the module within.

You can find out more information on the course page, visit www.arden.ac.uk. Alternatively, please call our admissions team on:

+44 (0) 2476 515700 or

0800 268 7737 for more details.

Entry requirements

To be eligible for this course you must have either:

Two subjects at GCE A level or equivalent, plus passes at grade C or above in three subjects at GCSE level including mathematics or equivalent; or completed a recognised Access Programme or equivalent.

For students whose prior learning was not taught in English:

IELTS 6.0 or equivalent.

If you have work experience

We're happy to consider an application from you if you can show us you have the motivation to study the programme.

How to apply

Visit: www.arden.ac.uk

Email: admissions@arden.ac.uk

Call: +44 (0) 2476 515700 / 0800 268 7737