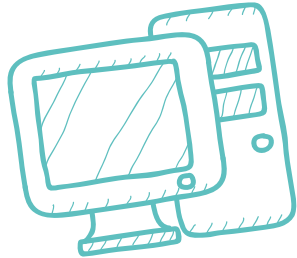




If you have previously completed an appropriate HND (or equivalent), then this Top-Up will enable you to achieve a full undergraduate honours degree in computing.

You will explore technology, methods and evolving trends from the world of computing and acquire the practical skills that will help you pursue your career ambitions or further study.



Modules are:

Current Trends in Networking

This constantly evolving module looks at leading edge technologies and their impact on people. You'll be evaluating whether a new product is better than the old one and assessing the impact of innovation in the communications sector.

Management in IT

By this stage, you'll be thinking pretty seriously about your next steps. We will spend time with you, looking at what it takes to be an IT or technology manager. You'll explore how you'd fit into a business and how you'd manage your own department.

Computer Systems Security

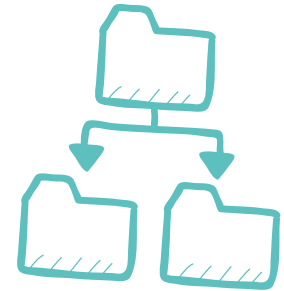
Cryptographics is a great word. It's also the basis of all-important computer security. This module will look at cybercrime, the law, and those weak spots where systems and individuals might be vulnerable to attack.

e-Commerce Systems

You'll be designing and building your own e-commerce system in this module. You'll get an in-depth look behind the digital shop front, including client-server computing, mark up languages, client side scripting and server side scripting.

Computing Project

This last big project gives you the chance to really get your teeth into the bits of the course that you love. Whether it's an experiment, an investigation or a practical piece of work is entirely up to you. You will need to back it up with academic work and tech, and we'll encourage you to do surveys and interviews to come up with your own data. Don't worry - one of your tutors will always be there to keep you on track.





Course duration and hours of study

This varies depending on your rate of progress - you can access modules at a pace that is convenient for you. Once you have accessed a module, there is a minimum and maximum time that you will need to finish the module within.

You can find more information on the course page by visiting

www.arden.ac.uk. Alternatively, please call our admissions team on: 0808 273 9759 for more details.



Entry requirements

To be eligible for this course you should have:

A relevant HND or equivalent, provided that the total of your learning experience allows you to achieve the aims of the programme.

For students whose prior learning was not taught in English:

IELTS 6.0 or equivalent.

